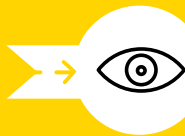




Starting Community Engaged Learning in 5 steps

6 months - year



1

DETERMINE THE FOCUS

- Identify the societal challenge that you want to address. Consider a broad theme rather than a specific question at this stage.
- Identify possibilities in the curriculum for adapting an existing course to incorporate CEL components or designing a new course.
- Start thinking about key learning objectives for students in the course in line with the curriculum.

6 months - year



2

MEET AND MATCH

- Find partners in the field through your network, via colleagues, or by connecting with relevant UU research hubs and focus areas.
- Explore shared ambitions and possibilities for collaboration. This can also go hand in hand with step 1, when an interaction with a potential partner inspires your focus.
- Determine whether ambitions can be merged into a **reciprocal** collaboration.

4 months



3

DEFINING THE PARTNERSHIP

- In further interactions, formulate more specific project **outcomes**.
- Discuss **input** (resources), **activities**, and **outputs** (both academic and public).
- Discuss **expectations, roles, and responsibilities**, including time commitment, communication, student supervision, and assessment.

± 4 - 6 months



4

COURSE DESIGN

- (Re)design the course and syllabus and prepare teaching staff for CEL.
- Design classroom-based learning activities to prepare students for 'going into the field'.
- Design **reflection** activities to enhance the learning process.
- Make sure to align all intended learning outcomes, teaching and learning activities, and assessment tasks.

± 2 - 3 months



5

EVALUATION STRATEGY

- Plan how to optimize the **learning** in this project through continuous monitoring and reflection.
- Select or design **evaluation** measures for outcomes and improvement.
- Develop tools and systems to collect data and communicate insights on impact.

More information
intranet.uu.nl/en/cel