



# projections for future delta land loss

potential ecosystem-based adaptation?

***Enabling Ecosystem-based Adaptation for Climate Adaptation***

Oct 13, 2021

Jaap Nienhuis

Utrecht University



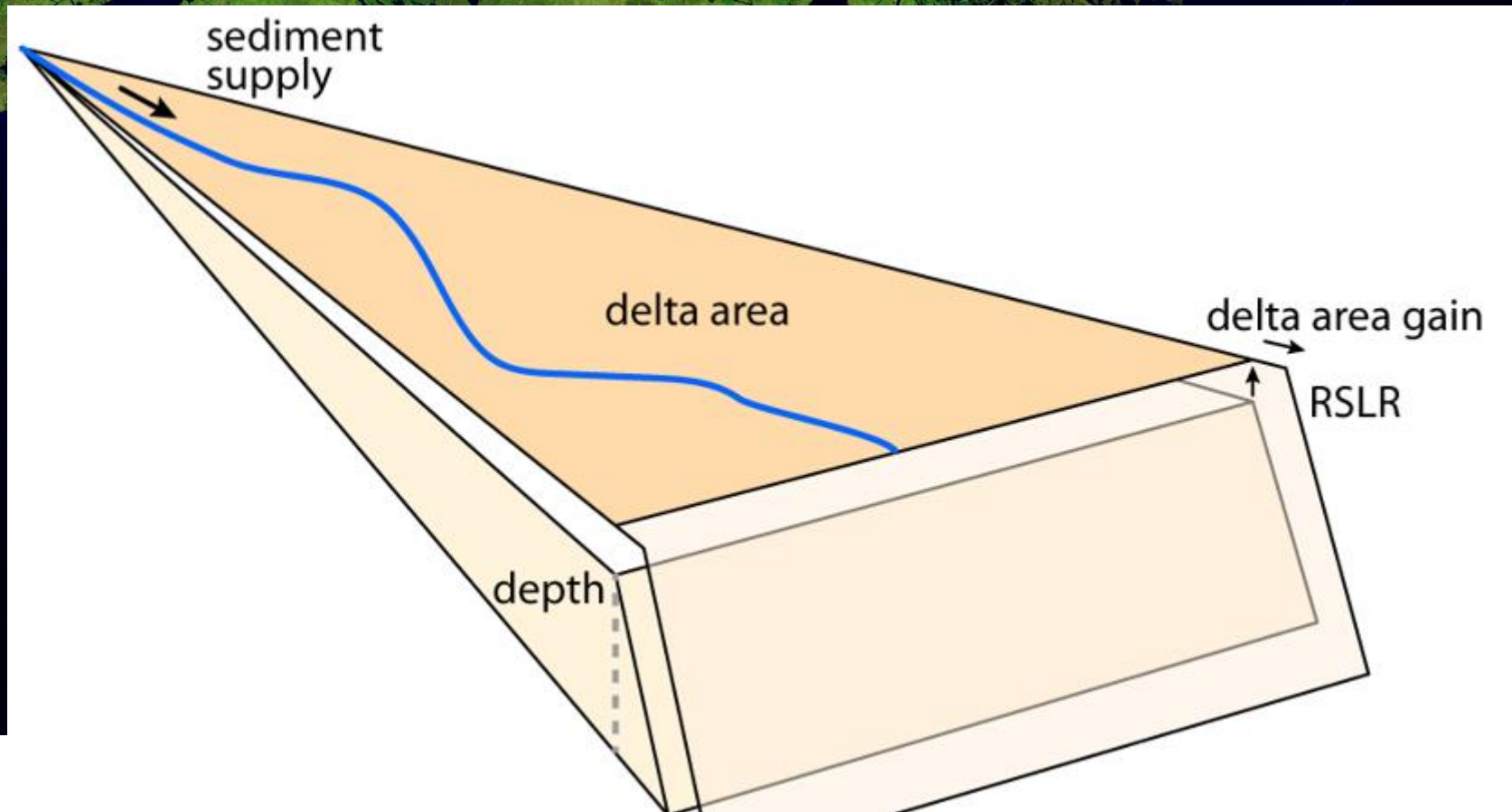
An aerial photograph of a river delta, showing a complex network of channels and distributaries. The land is a vibrant green, indicating lush vegetation, while the water bodies are dark. The delta is situated at the confluence of a river into a larger body of water, likely the ocean.

**1. Deltas at risk**

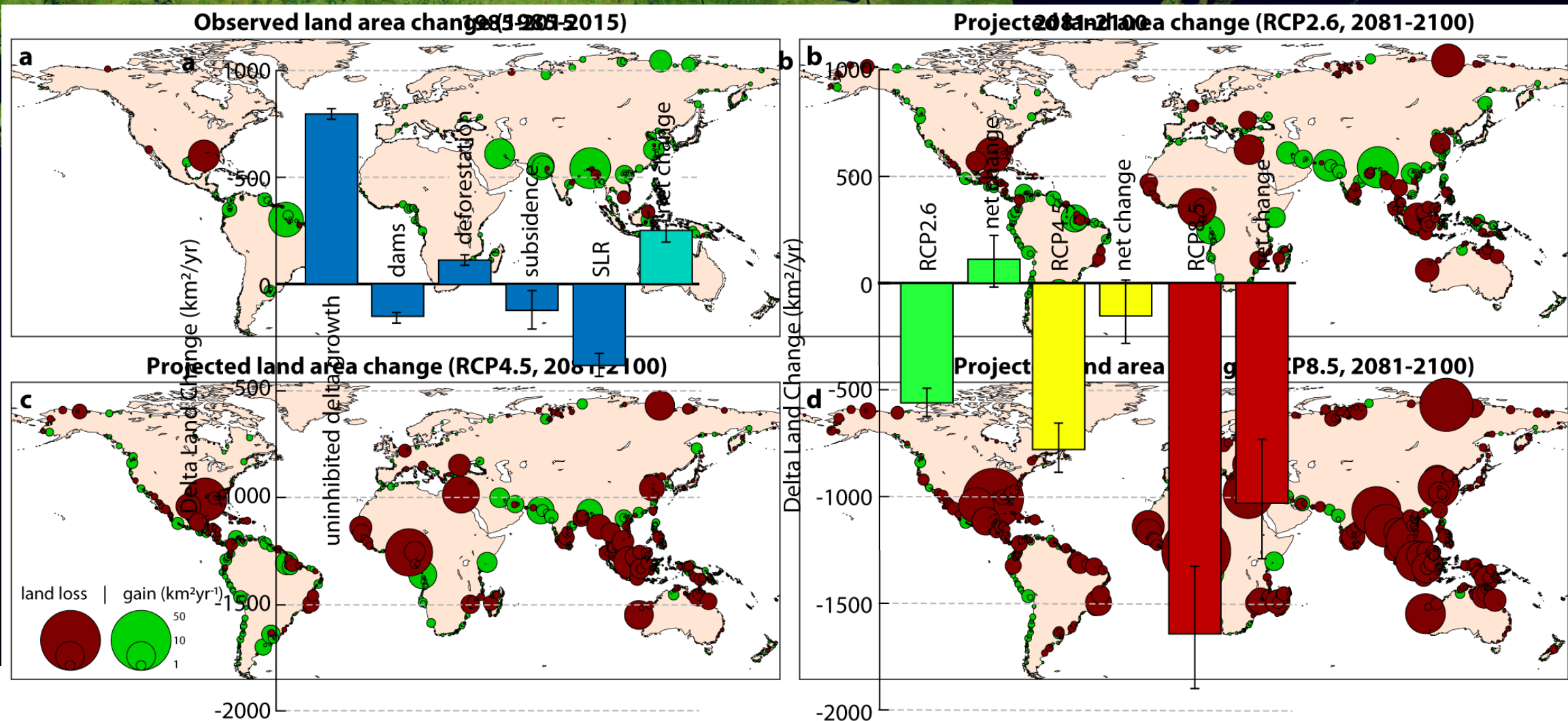
**2. Knowledge gaps for ecosystem-based adaptation**



# 1. Deltas at risk



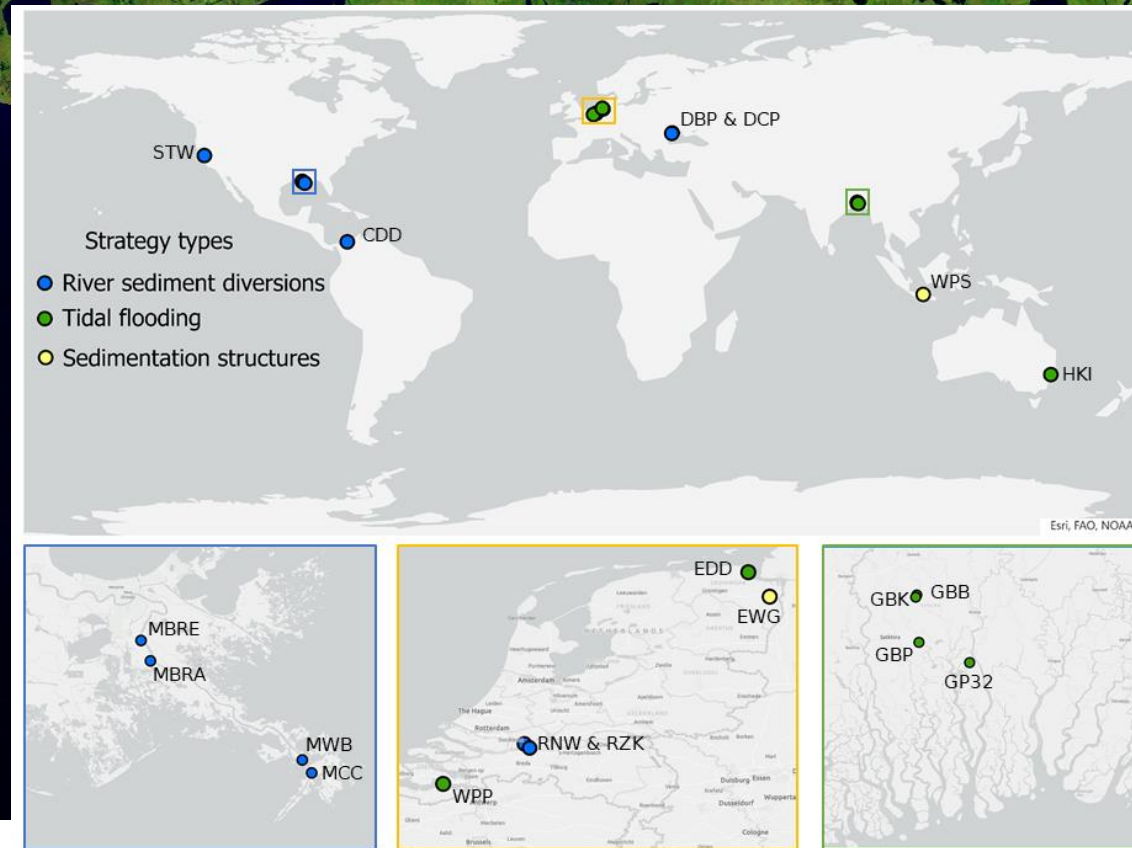
# 1. Deltas at risk





# 1. Deltas at risk

## 2. Knowledge gaps for ecosystem-based adaptation



# Sedimentation enhancing strategies

Wetland restoration in Sears Point, California





# Mangrove planting

Philippines



# Tidal river management

Beel Khuksia, Bangladesh

2001



2009



2013



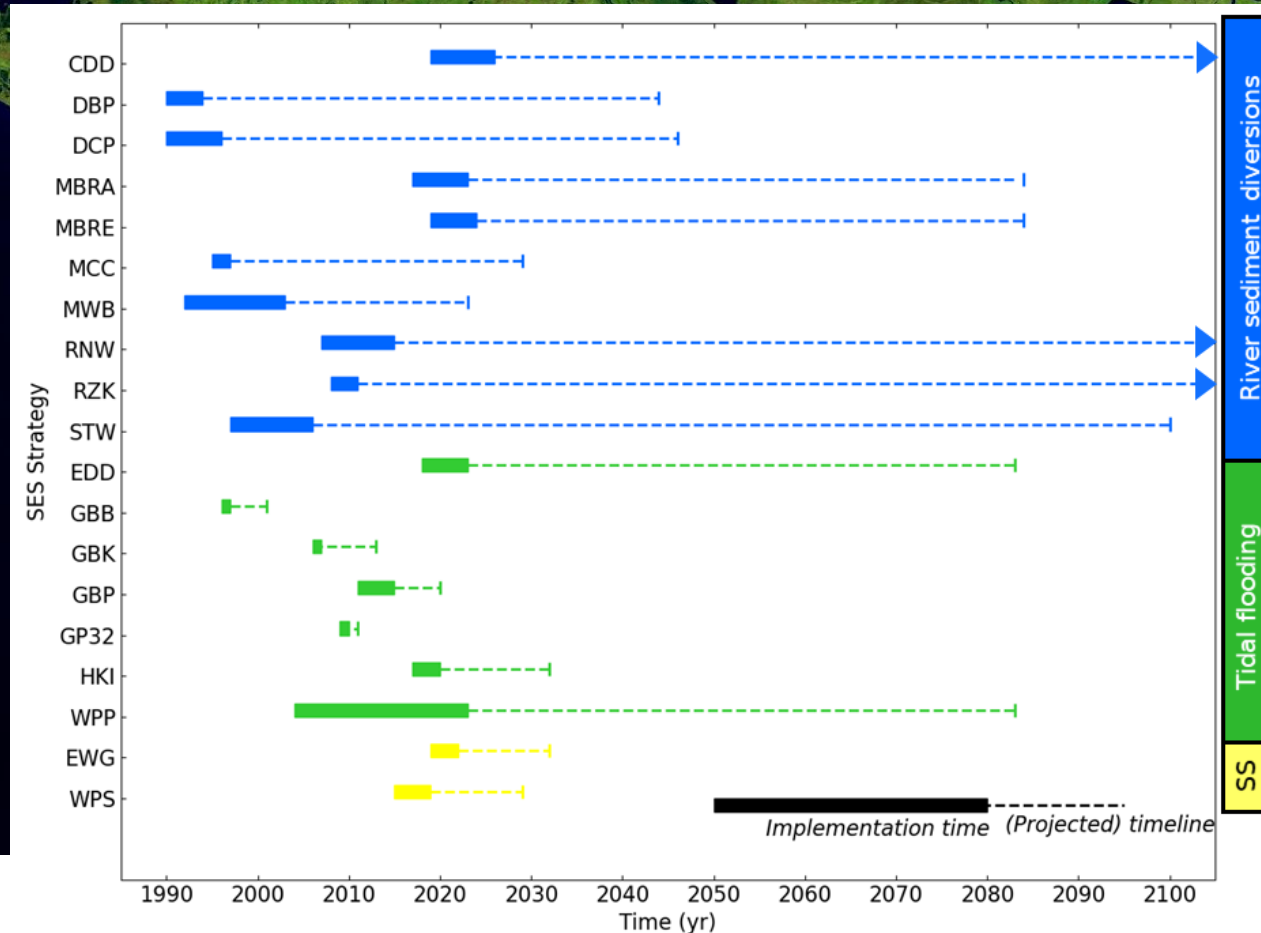
2021





# 1. Deltas at risk

## 2. Knowledge gaps for ecosystem-based adaptation



# 1. Deltas at risk

## 2. Knowledge gaps for ecosystem-based adaptation

