

ADEKUSXUU

a renewed partnership



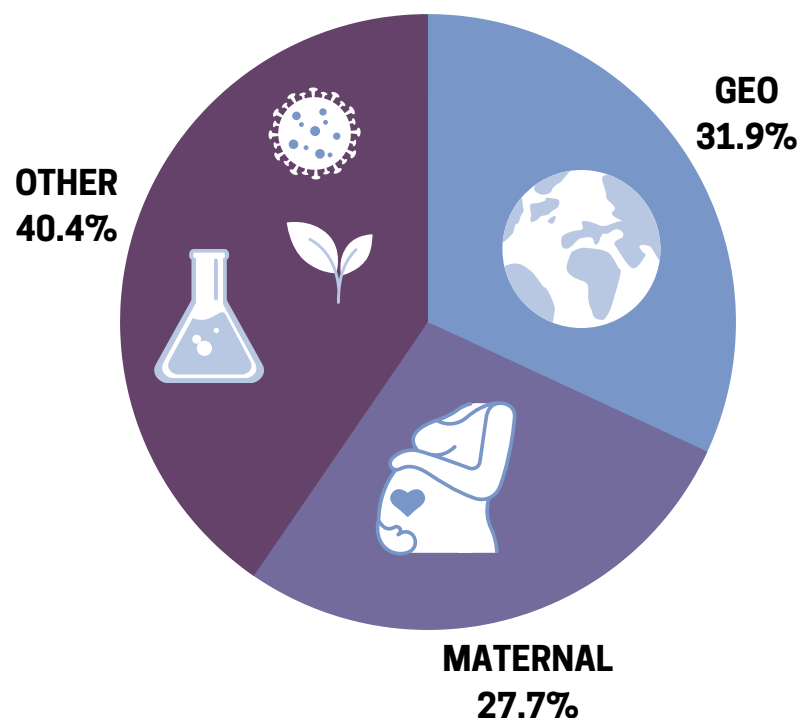
In light of the establishment of a formal cooperation in October 2021 between **Anton de Kom University of Suriname** and **Utrecht University**, let us take a look at what the two universities have previously collaborated on in the last **five** years!

Research Publications

[SEE INVENTORY >>>](#)

2015 - 2021

37



15 GEOSCIENCE

research publications

Collaborations between researchers from faculties in both the **UU** and **ADeKUS** take place with locations throughout Suriname tackling a variety of topics.

Ultramafic rocks of the Paleoproterozoic greenstone belt in the Guiana Shield of Suriname, and their mineral potential

Paul R.D. Mason (UU) | Renoesha Naipal; Salomon Kroonenberg (ADeKUS)

Petrography, geochemistry and age of the Armina Formation metaturbidites of the Coppename River, Suriname

Paul R.D. Mason (UU) | Genevieve W. Wijngaarde; Salomon B. Kroonenberg (ADeKUS)

TOPICS COVERED



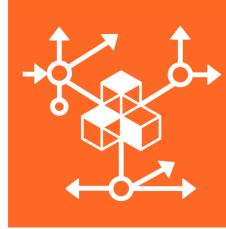
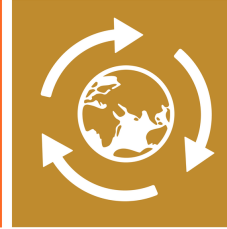
Bauxite & Gold deposits

Mineral Formation

Greenstone Belt

Mangroves

TOP SUSTAINABLE DEVELOPMENT GOALS TACKLED:

TARGET 8-2	TARGET 8-4	TARGET 9-5	TARGET 12-2
			
DIVERSIFY, INNOVATE AND UPGRADE FOR ECONOMIC PRODUCTIVITY	IMPROVE RESOURCE EFFICIENCY IN CONSUMPTION AND PRODUCTION	ENHANCE RESEARCH AND UPGRADE INDUSTRIAL TECHNOLOGIES	SUSTAINABLE MANAGEMENT AND USE OF NATURAL RESOURCES

For more information on research collaborations in the Faculty of Geosciences, follow the links

[Excel Inventory](#)

[SDG Mapping](#)

[INSERT LINK](#)

13 MATERNAL HEALTH

research publications

Collaborations between researchers from faculties in both the **UU** and **ADeKUS** tackle policies, guidelines and a range of conditions

From Passive Surveillance to Response: Suriname's Efforts to Implement Maternal Death Surveillance and Response

Kim J.C. Verschueren; Kitty W. M. Bloemenkamp(UU) | Lachmi R. Kodan (ADeKUS) | Et al.

Trends in maternal mortality in Suriname: 3 confidential enquiries in 3 decades

Kim J.C. Verschueren; Joyce L Browne; Kitty W.M. Bloemenkamp; Marcus J. Rijken (UU) | Lachmi R. Kodan; Raez Paidin; Rubinah Paidin; (ADeKUS)

TOPICS COVERED

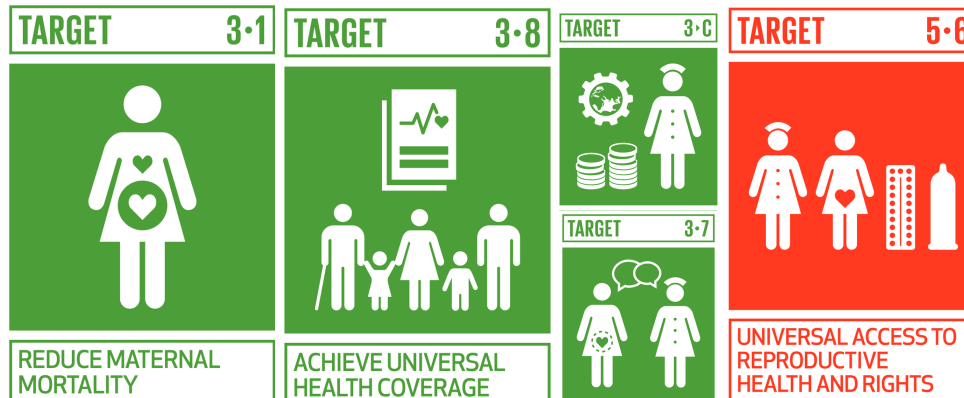
Postpartum Hemorrhage

Maternal Mortality

Care Guidelines

Eclampsia

TOP SUSTAINABLE DEVELOPMENT GOALS TACKLED:



For more information on research collaborations in the Faculty of Geosciences, follow the links

[Excel Inventory](#)

[SDG Mapping](#)

[INSERT LINK](#)