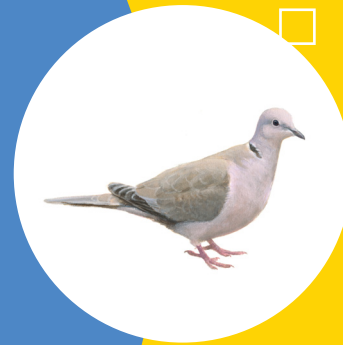
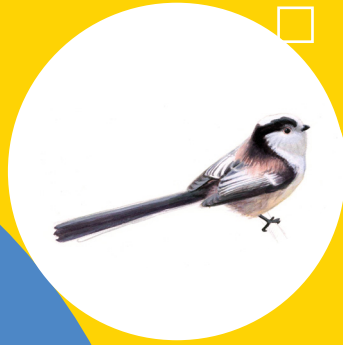


Bird Bingo

Green Office



Welcome to our blissful Bird Bingo. Play bingo, learn more about the birds in your local area and win a cute gift while you're at it.

How to play Bird Bingo. Whenever you spot a bird that's represented on the bingo card, take a picture of it. If you spot a bird that doesn't feature on the card, grab a picture too as it can count for one of the 'mystery bird' boxes at the bottom of the card. If you enjoy getting creative, you can also make an illustration of a given bird on the card and check it off.

Bingo! ...when you've spotted (or illustrated) 6 birds. Send your set of bird pics to greenoffice@uu.nl by Friday the 29th of May by midnight. If you do this, you'll receive a magnificent gift!

Please note: it is not necessary to print off the bingo card. Simply attach six images (file names should be the bird's names) to the email.

Greenfinch

mainly inhabits cultivated landscapes and seeks out dense bushes.



Long tailed tit

commonly spotted in forests, parks and gardens with plenty of trees.



Robin

this species loves forests, groves, shrubs and hedges. Can be spotted in parks.



Starling

likes to nest in holes but is easily spotted in parks and gardens.



Turkish turtle dove

this bird has become very accustomed to urban spaces.



Swift

spends most of its time in the air in large flocks. Seeks out old buildings to nest in.



Great tit

loves to hang out in bushes and little forests with lots of glades.



House sparrow

exists in various habitats and is a very well-known breeding bird in towns and cities.



Bue tit

often found in parks and gardens, leaping on the tiniest twigs.



Chaffinch

loves green areas, is most common in forests, wooded gardens and parks.



Blackbird

can be spotted hopping on the ground in parks and gardens.



Wren

particularly common in wooded areas of higher sandy soils.

