



CHALLENGES IN DELTAS UNDER PRESSURE

*James (Jai) Syvitski
&
S A Higgins
CSDMS*



www.iahr2015.info

Facebook: IAHR2015

Twitter: @IAHR2015
#IAHR2015NL



CHAPTER 1



On Deltas and Humans

My Love of Deltas

Delta Blues

I was grew up on the Kam delta

It became my first (1975) thesis.

My '78 doctoral thesis was on another delta.

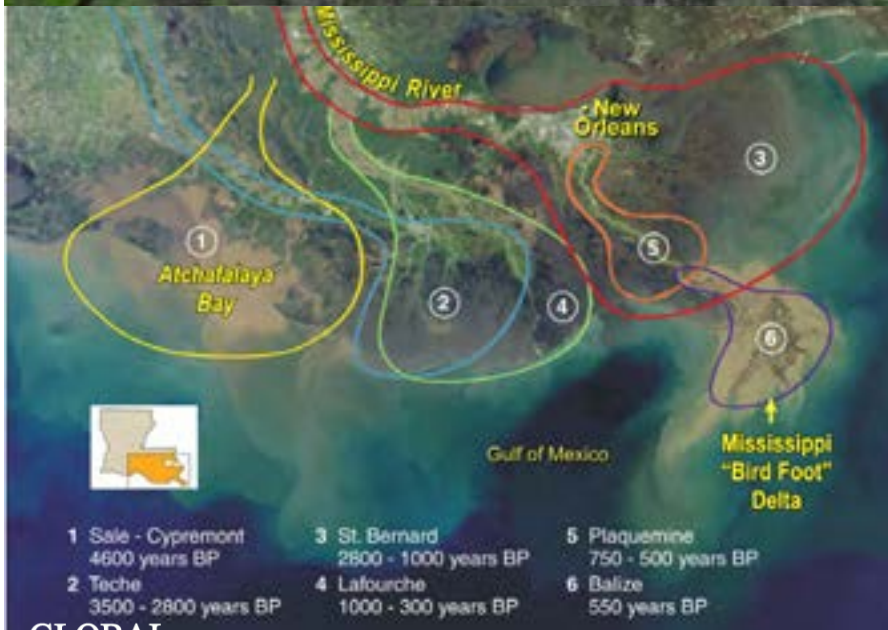
Over my career I visited and researched another 50 deltas.

I know and love deltas. They are like snowflakes, similar yet different.



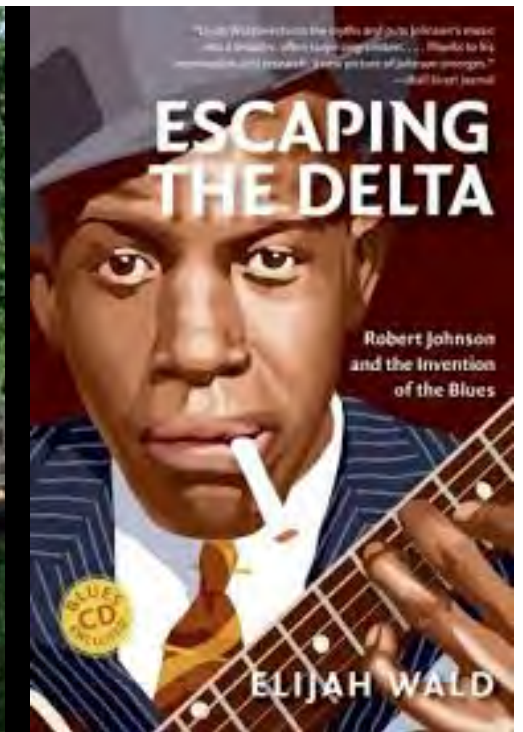
Thunder Bay

Fort William First Nation

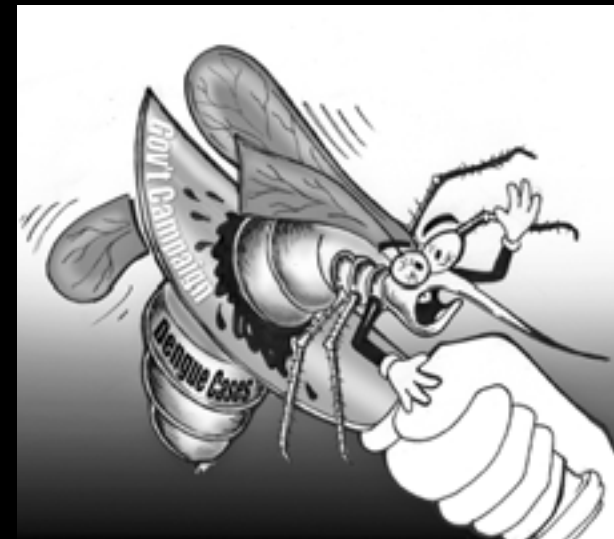


Pristine deltas are dynamic wetlands, with lobe & channel switching, and shorelines shifting under the influence of rivers, tides and waves.

They offer lush vegetation, diverse forests, wildlife, fisheries, & rich organic muddy soils. Movement through these ultra-flat environments was mostly aquatic.



Delta wetlands were also host to many (sub) tropical infections, from disease-carrying insects to parasites and wildlife that kept human populations low.



GLOBAL
IGBP
CHANGE
International
Geosphere-Biosphere
Programme

CSDMS
COMMUNITY SURFACE DYNAMICS MODELING SYSTEM

Syvitski 2015, IAHR



Yearly Landsat images

Most deltas formed ~7000 y ago when sea level was stable. But human-causes also contributed to the generation of modern deltas (e.g. Po, Ebro, Rhone, Yellow). For example deforestation in Madagascar let to many new deltas (MOVIE).

CHAPTER 2



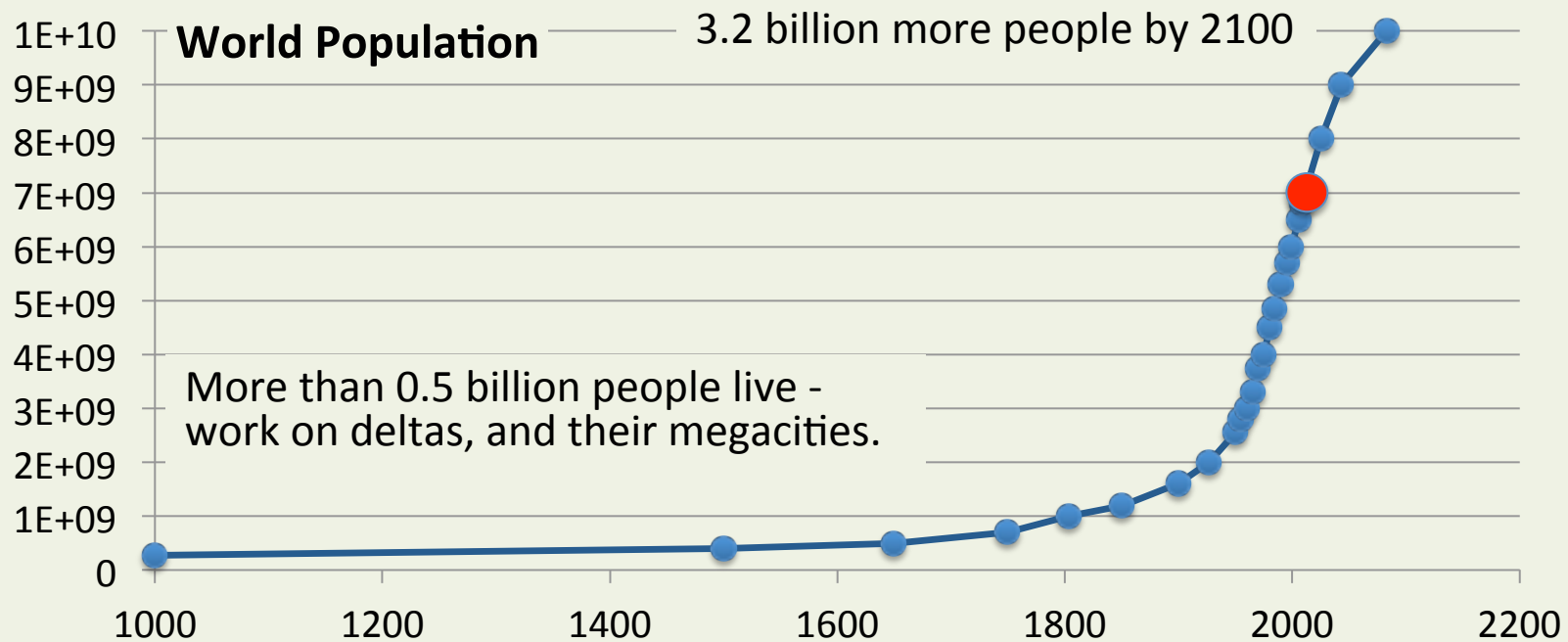
20th Century Transformation

Population & Migration

Engineered Water

Damn Dams - Missing Water & Sediment

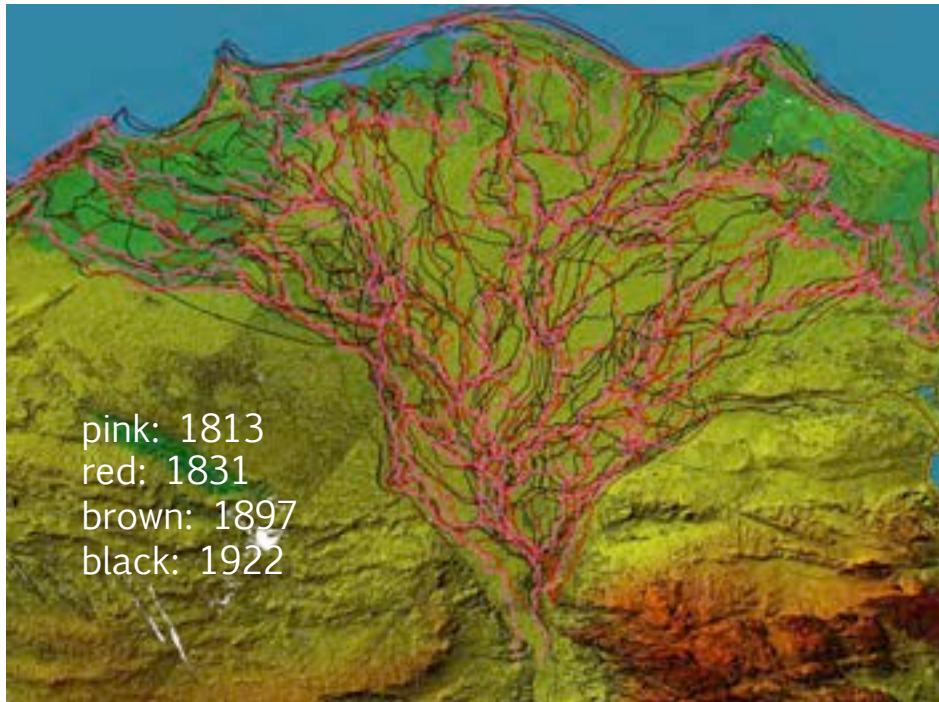
Changes in Land Use



City	Delta	1975	2000	2010
Karachi	Indus	4.0	10.0	12.0
Kolkata	Ganga	7.9	13.1	15.1
Dhaka	Brahmaputra	2.2	9.5	13.0
Rangoon	Irrawaddy	1.8	4.4	6.3
Bangkok	Chao Phraya	3.8	7.4	11.9
Ho Chi Minh	Mekong	2.8	6.6	10.0
Hanoi	Red	1.9	7.8	14.5
Guanzhou	Pearl	3.1	8.9	12.8
Shanghai	Changjiang	11.4	12.9	20.0
Tianjin	Old Huanghe	6.2	9.2	10.3
Cairo	Nile	6.0	10.5	14.5
Buenos Aires	Parana	10.9	11.8	12.8

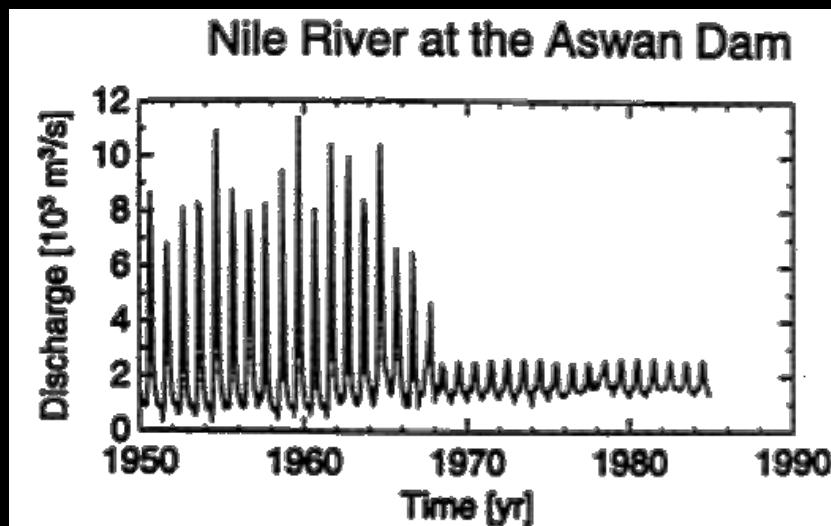
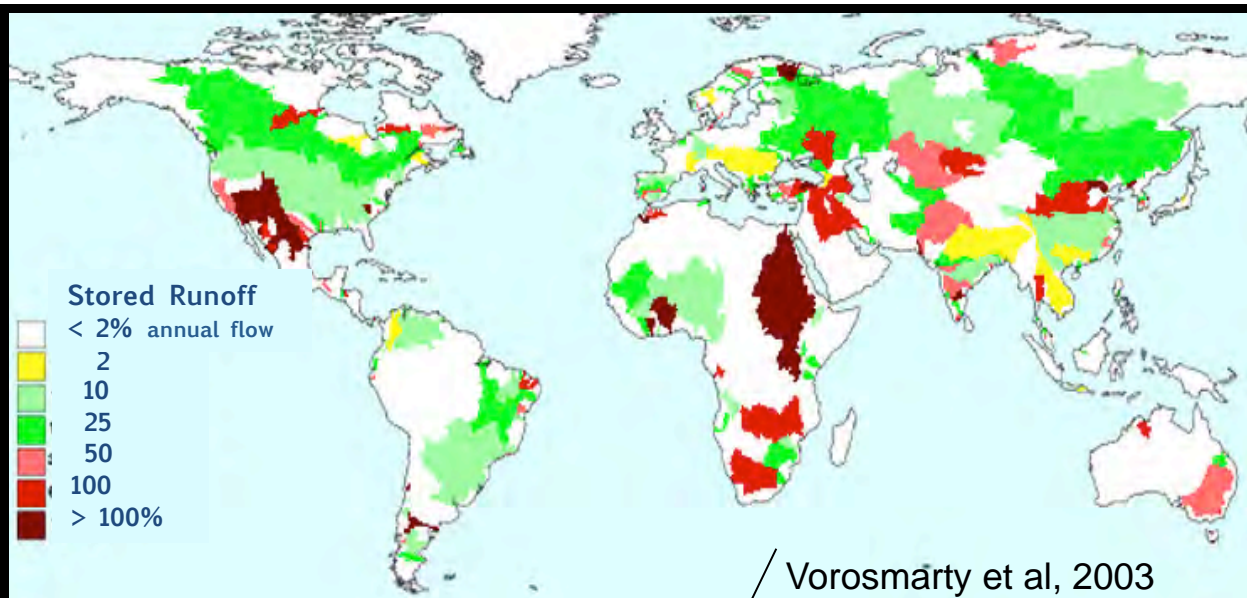
Migration

12 delta cities have gone from 62 M people in 1975 to 153 M people in 2010



When you add 50 million people to a delta (Nile), you do not want channel avulsions and shifting, particularly when valuable infrastructure is at risk (e.g. Vancouver Intl Airport). So you reduce the number of channels, and engineer the flow of water.





Water engineering distorts a river's flow and timing, with delays, diversions, storage — providing for unusual hydrographs & sediment sequestration

The global location of very large dams.
Note 1952 and China's Great Leap forward.

YEAR

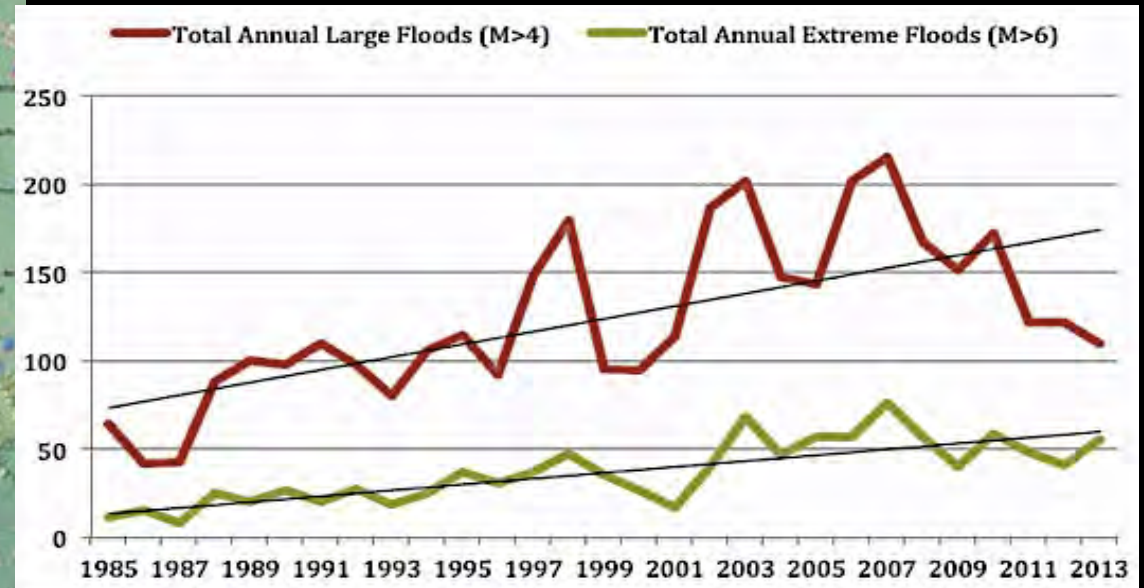
1800



Movie credit: CSDMS

On average we build one large dam every day
And for the last 130y !

Modification of the world's hydrological system continues to accelerate, and thus so do floods due to engineering failure



Syvitski 2015, IAHR

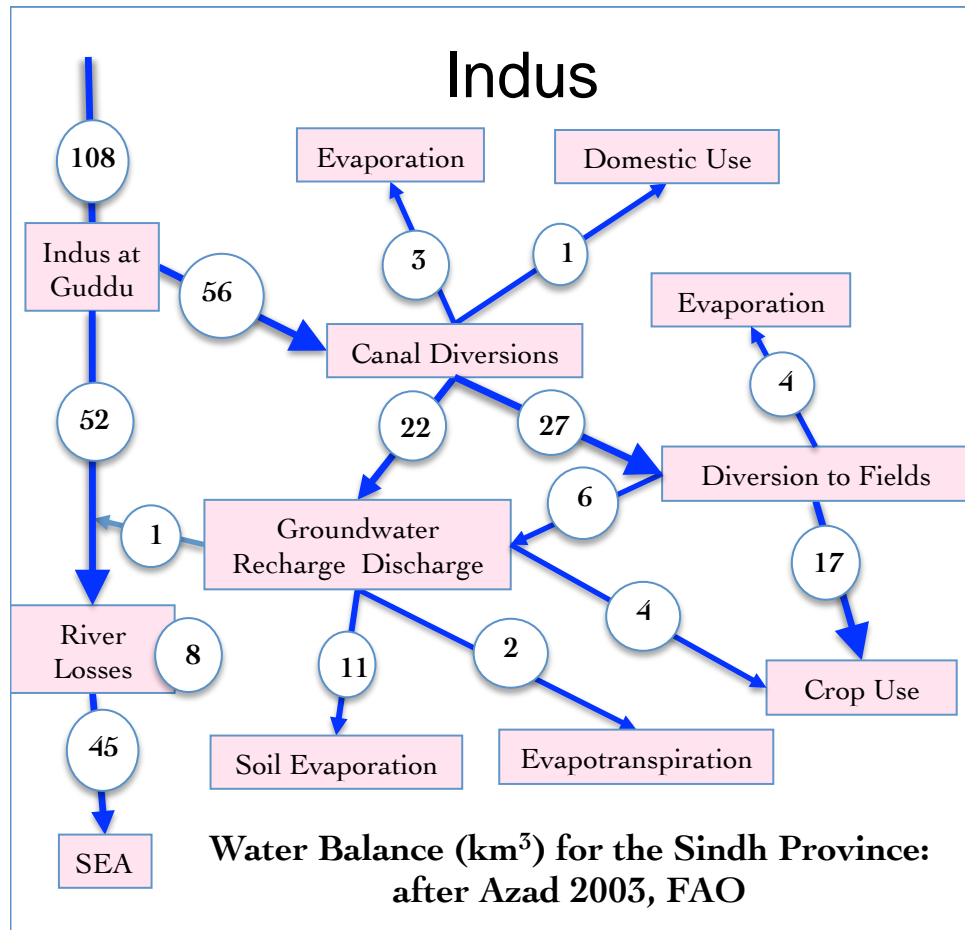
October 26- November 4, 2011

0 30 60
kilometers

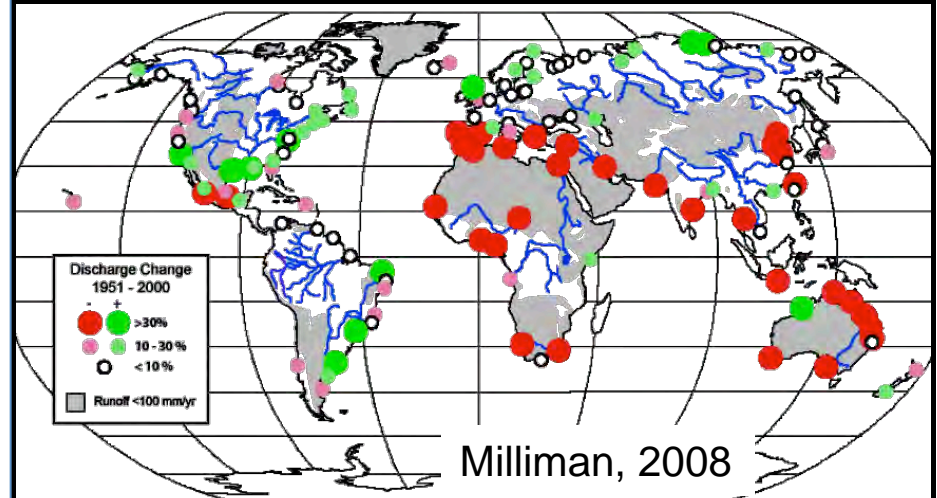
GLOBAL
IGBP
CHANGE
International
Geosphere-Biosphere
Programme

CSDMS
COMMUNITY SURFACE DYNAMICS MODELING SYSTEM

IAHR
AIRH
Supported by
Spate Water
and NWH, China
IAHR
2015

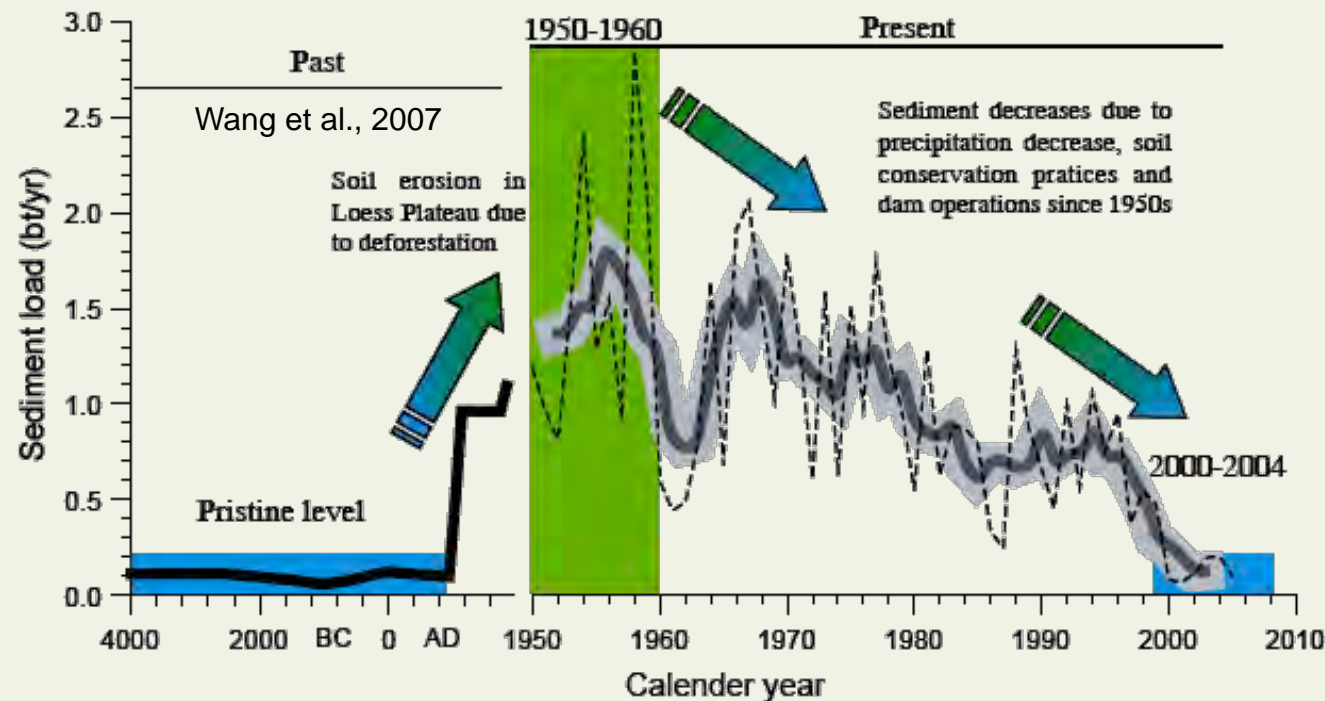
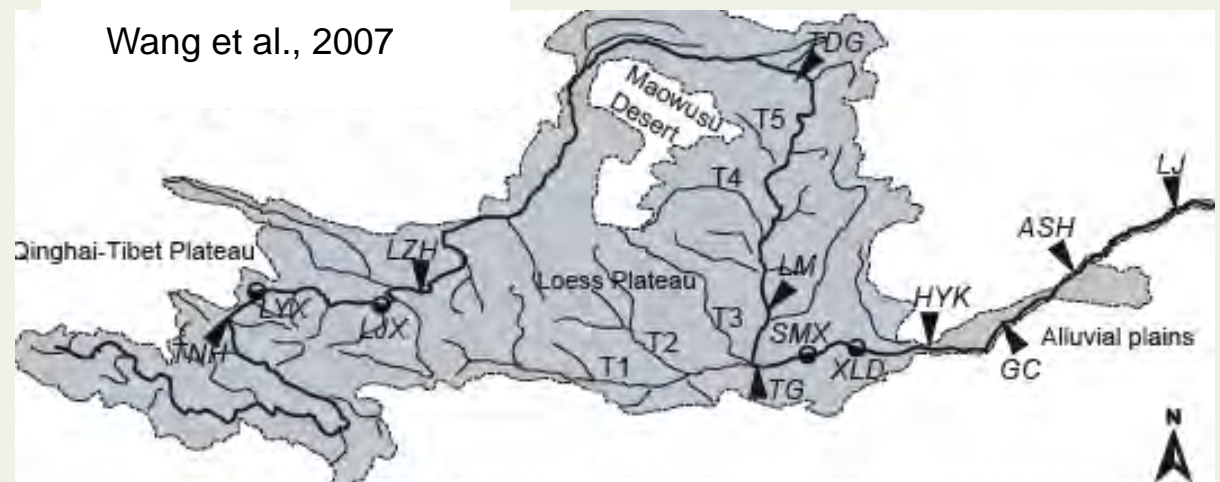


Engineering has reduced the amount of freshwater entering our delta systems

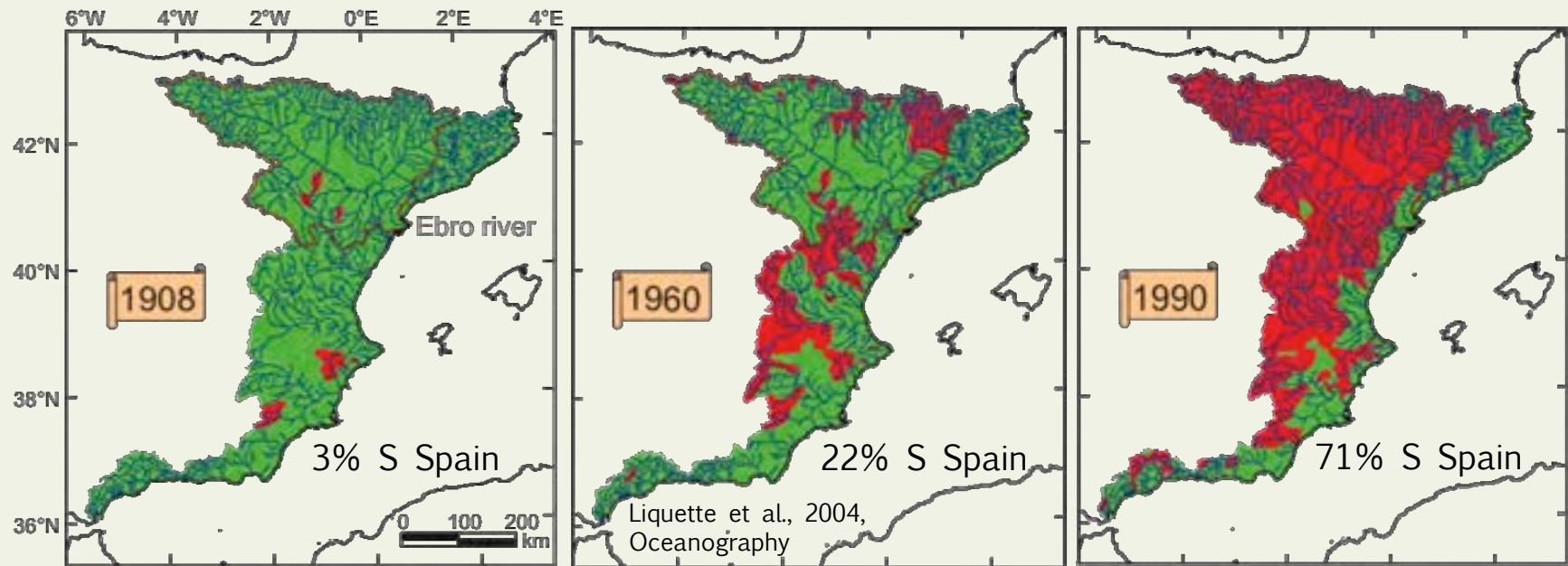


Leading to: reduced biodiversity; saltwater intrusion, salinization of soils; and increased coastal salinity & temperature.

Engineering has also reduced the amount of sediment entering our delta systems



Huanghe is an example of its sediment load returning to pristine levels through engineering



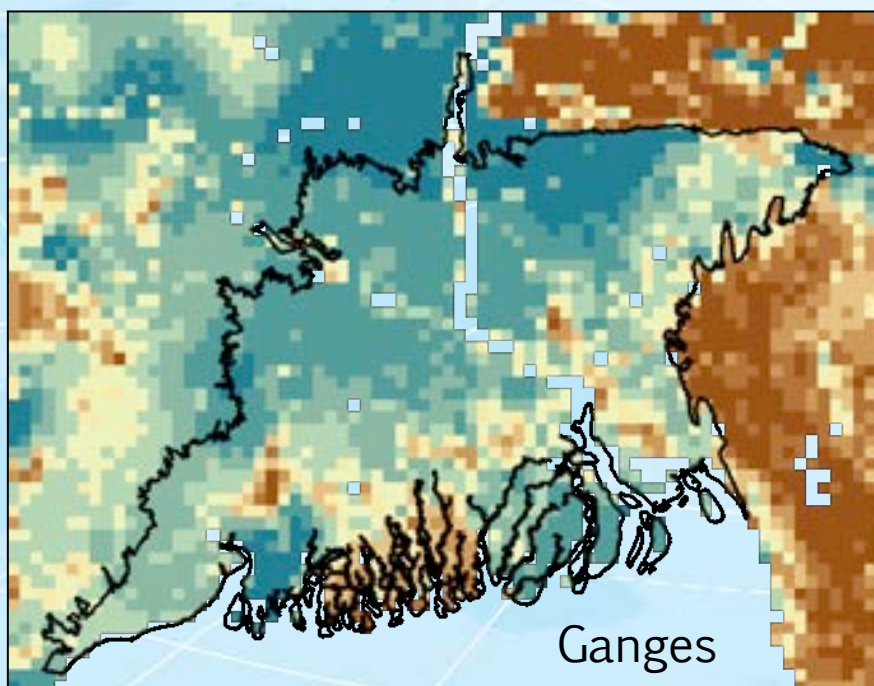
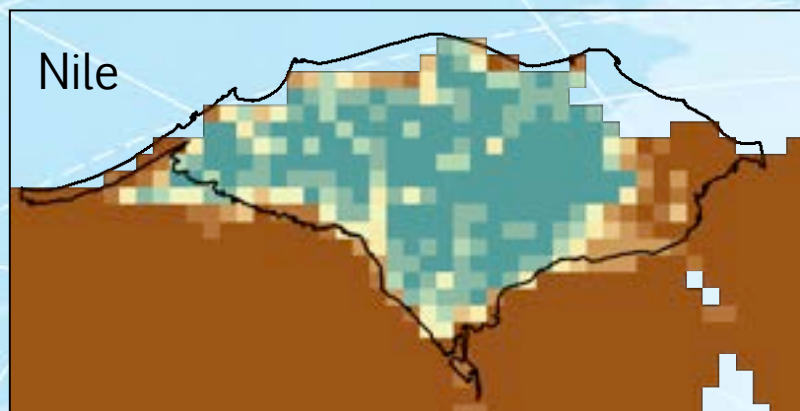
Ebro R. Water Sediment
 m^3/s MT/y

1913-62:	1732	18
1965-85:	429	2
1988-90:	300	0.2

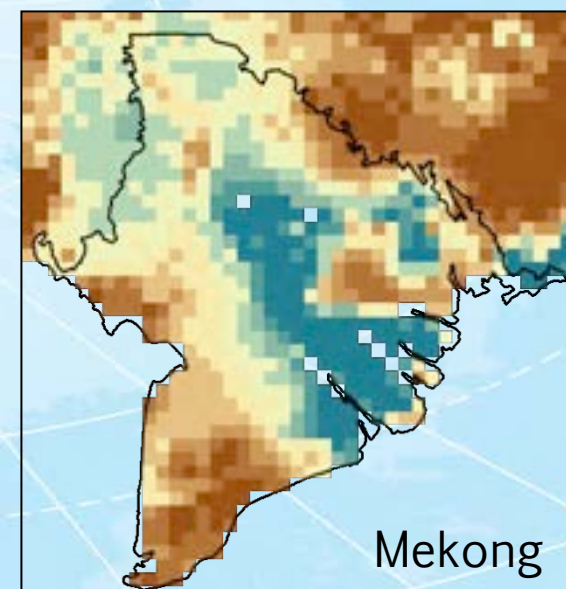
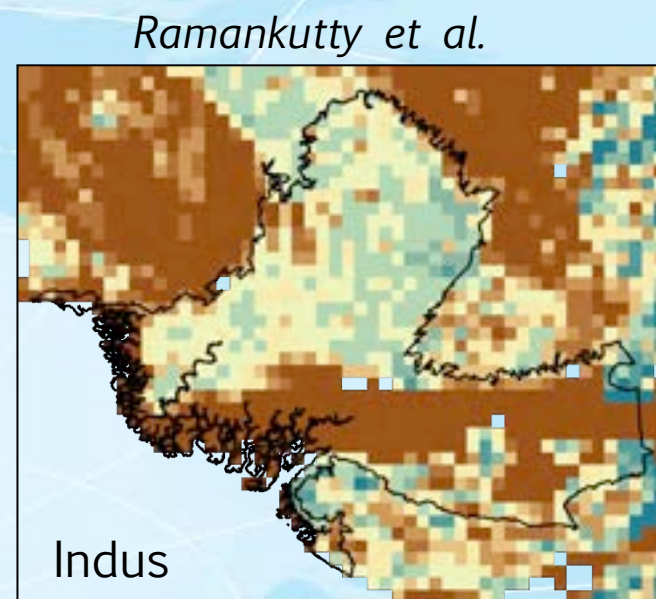
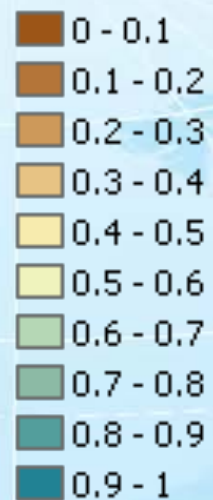
Since 1983, 110 MT of sand have been delivered by trucks to the Spanish shores to ease the rate of coastal retreat.



Once the World's Rice Bowls



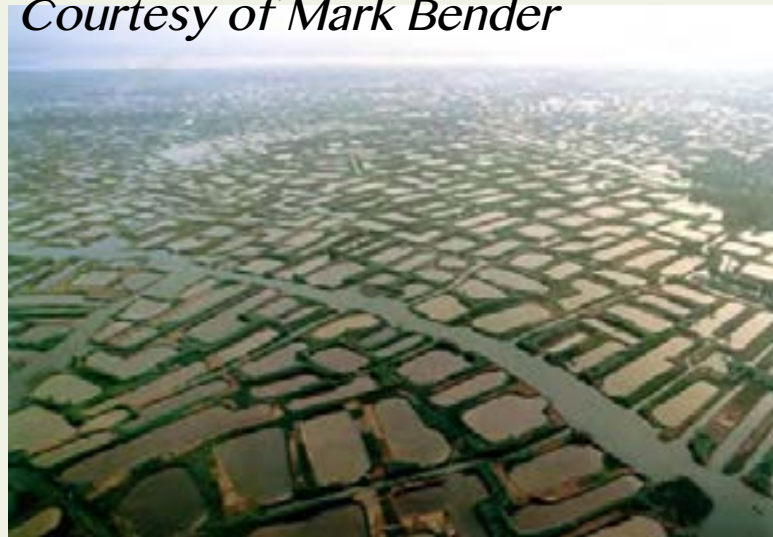
Proportion
Land in Crops



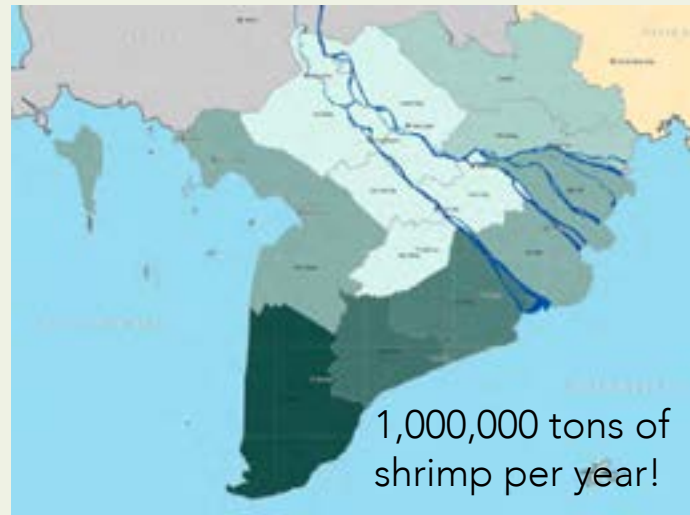
Deltas have transformed to become our Protein Bowls



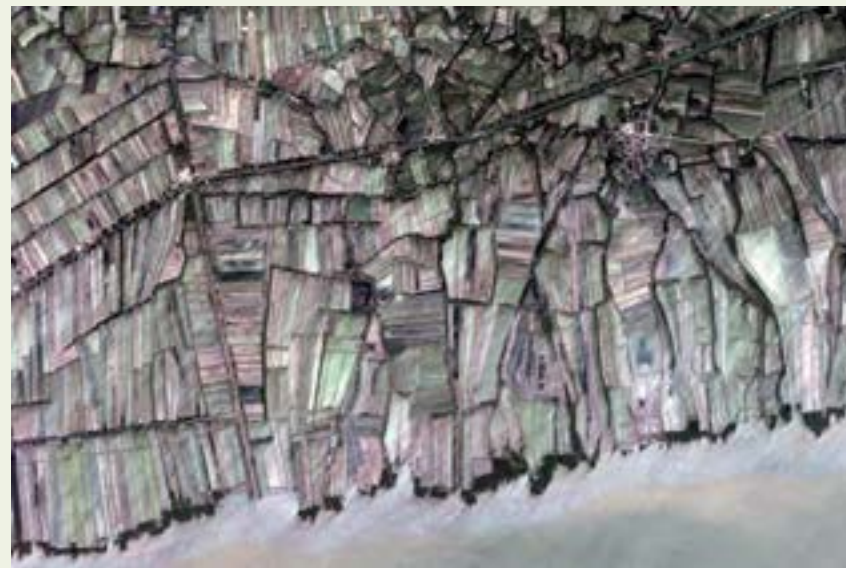
Pearl River delta, China
Courtesy of Mark Bender



Mekong delta, Vietnam
Wisdom Project/DLR (2009)



Destruction of mangrove forests for shrimp farms hastens shoreline retreat



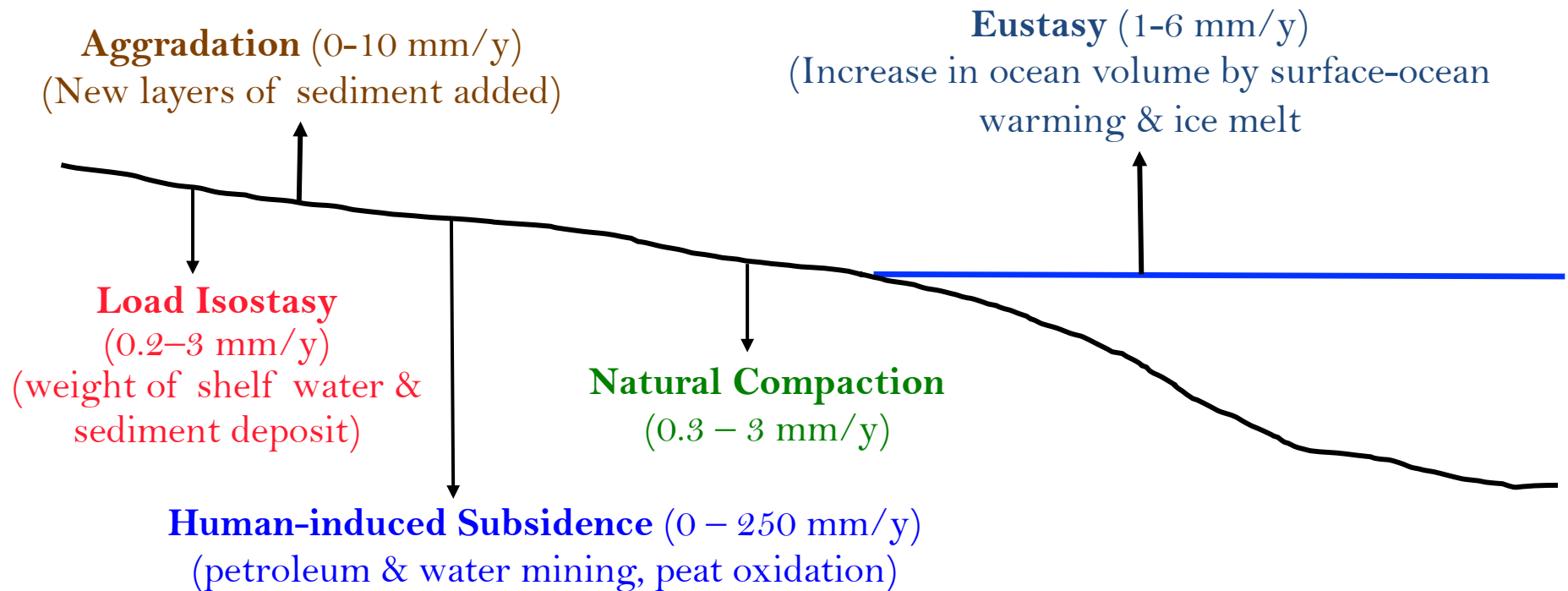
CHAPTER 3



To Sink or Not to Sink *The Balance* *Shrimp & Fish Farms*

Delta Surface Elevation Processes & Rates

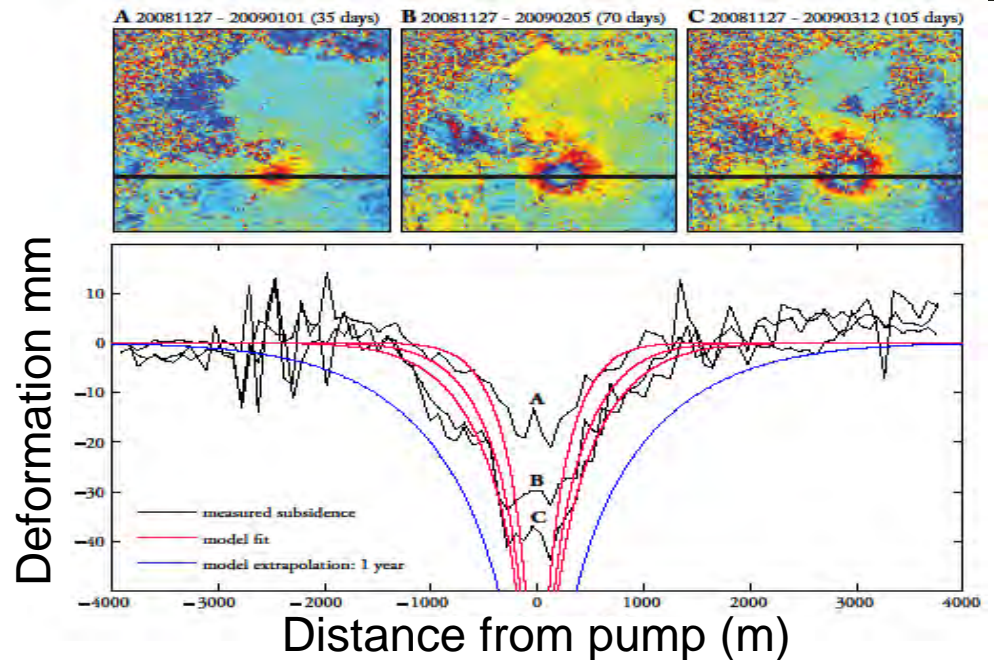
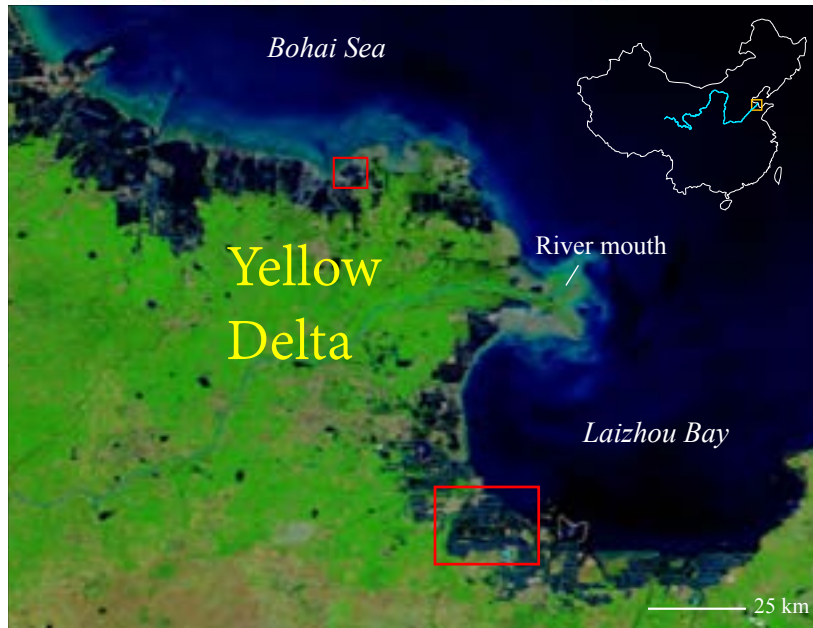
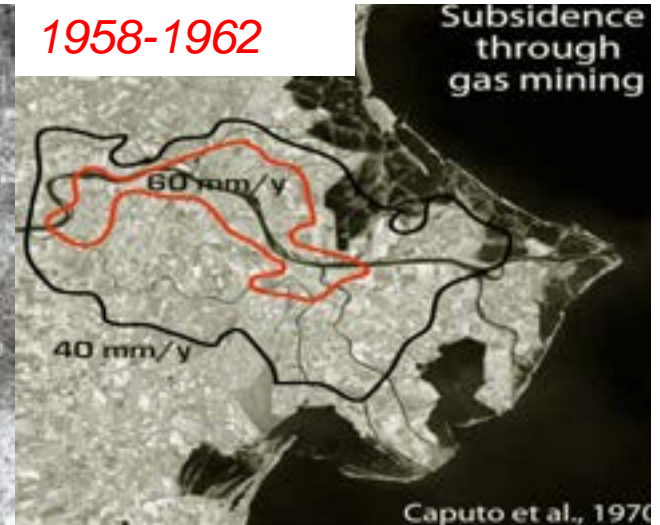
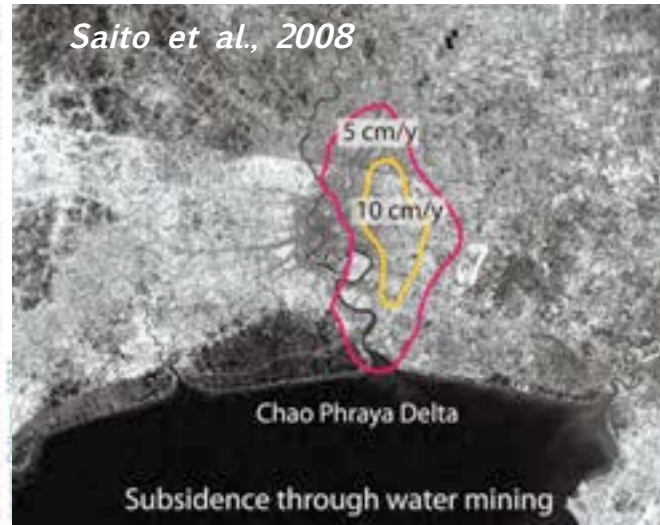
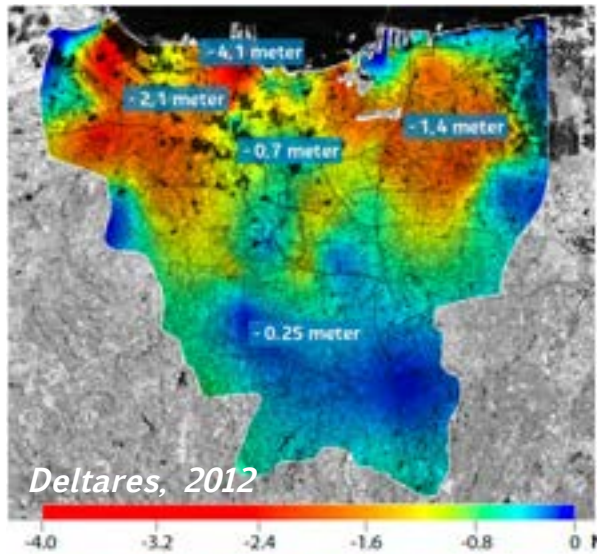
(Syvitski et al, 2009 Nature Geoscience)



Delta Surface Elevation

$$\Delta_{RSL} = A - \Delta E - C_n - C_A \pm M$$

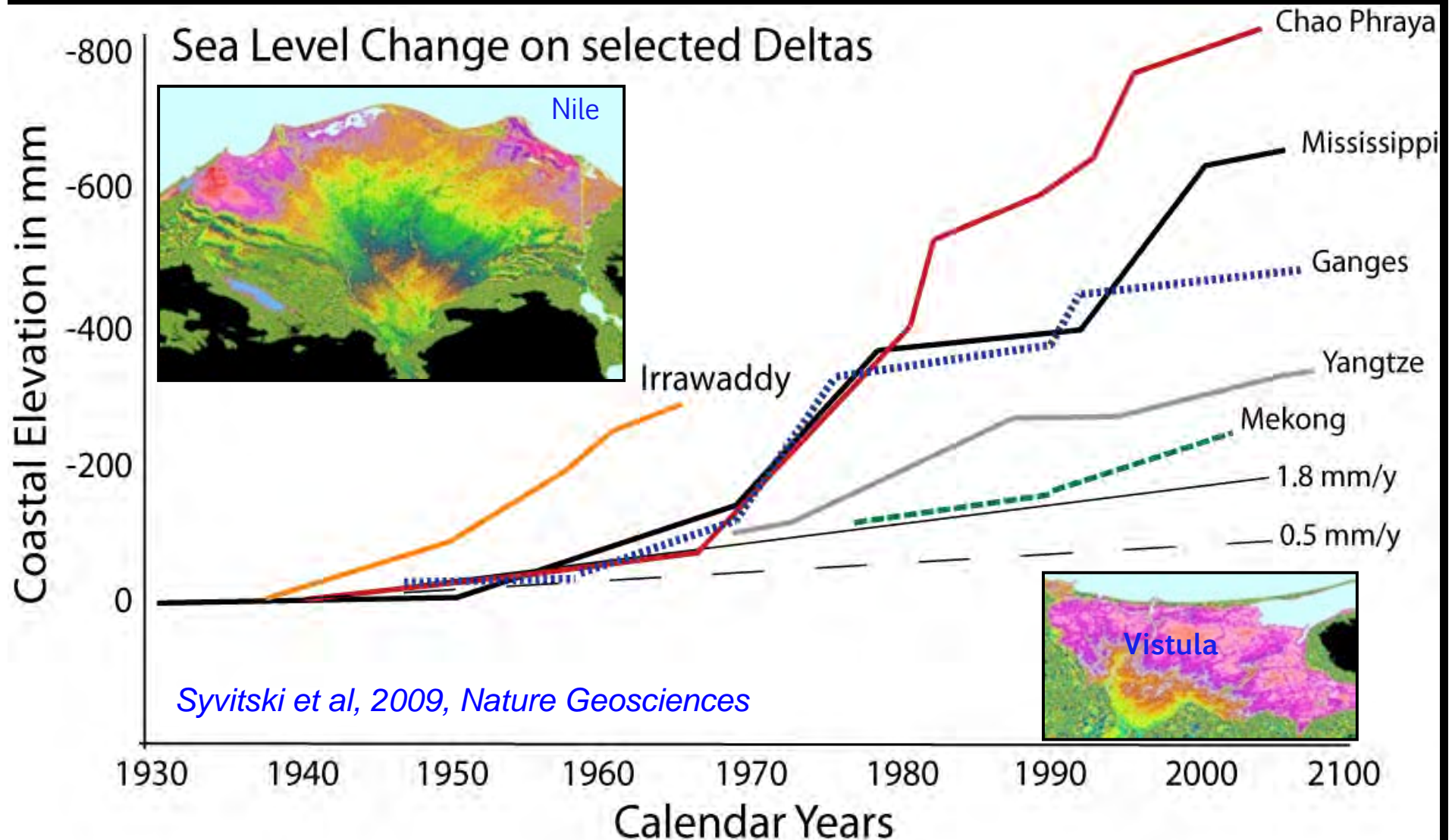
Each term is spatially and temporally variable, between deltas and within a delta.



Subsidence at fish farms is up to 250 mm/y due to groundwater extraction

Higgins et al., 2013, GRL & Higgins, S. (2014)

Humans are sinking deltas 4x faster than sea level is rising



CHAPTER 4



Consequences & Adaptation

Public Alarm

Inundation & Shoreline Erosion

Coastal Barriers & Failures

Adaptation

Sinking Deltas in the Press



Saturday, September 26, 2009

Sinking River Deltas Threaten Millions

A new report suggests that humans may be causing river deltas to sink.

Nile Delta: 'We are going underwater. The sea will conquer our lands'

The Nile Delta is under threat from rising sea levels. Without the food it produces, Egypt faces catastrophe



A farmer ploughs his rice paddy in the Delta. Photograph: Jason Larkin



All Free Articles Top 10 Last Month

[Home](#) > [News](#) > [Daily News Archive](#) > [2009](#) > [September](#) > 22 S

In Race With the Sea, River Deltas Falling Behind

UPI.com
100 YEARS OF JOURNALISTIC EXCELLENCE

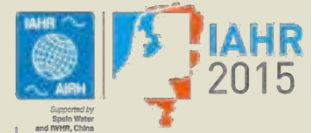
River deltas sinking due to human activity

Published: Sept. 21, 2009 at 2:06 PM

GLOBAL
IGBP
CHANGE

CSDMS
COMMUNITY SURFACE DYNAMICS MODELING SYSTEM

Syvitski 2015, IAHR



Sinking Deltas in the Press



You are here: [Home](#) » [Special Features](#) » River deltas and that sinking feeling threaten environment

Kalyan Ray in New Delhi

River deltas and that sinking feeling threaten environment

The Krishna River Delta in Karnataka is listed in the 'Greater Peril' category of high-risk rivers that threaten to flood.



The world faces a heightening risk of floods because major river deltas are sinking into the ground while the sea level is rising thanks to global warming. India is no exception. The threat of flooding is the highest in the Krishna River Delta which flows through Karnataka.



Three river delta areas sinking, report claims

By Wang Qian (China Daily)
Updated: 2009-09-23 07:40

[Comments\(1\)](#) [Print](#) [Mail](#)

CHINA DAILY
Today's Paper | [Subscribe](#)

Three river deltas in China are sinking due to global warming and excessive extraction of underground water, leaving millions of people with an increasing risk of floods, a recent scientific report showed.



BREAKING NEWS: Iran nuclear chief says U.N. will be allowed to inspect
newly revealed site

U.S. news Environment

Categories

U.S. news

Most major river deltas are sinking, study finds

Dams, other barriers upstream and drilling in deltas cited as key factors

Sinking Deltas in the Press



The Vancouver Sun

World's deltas in danger

Study finds two-thirds on planet shrinking

Sinking river delta could mean trouble along Fraser

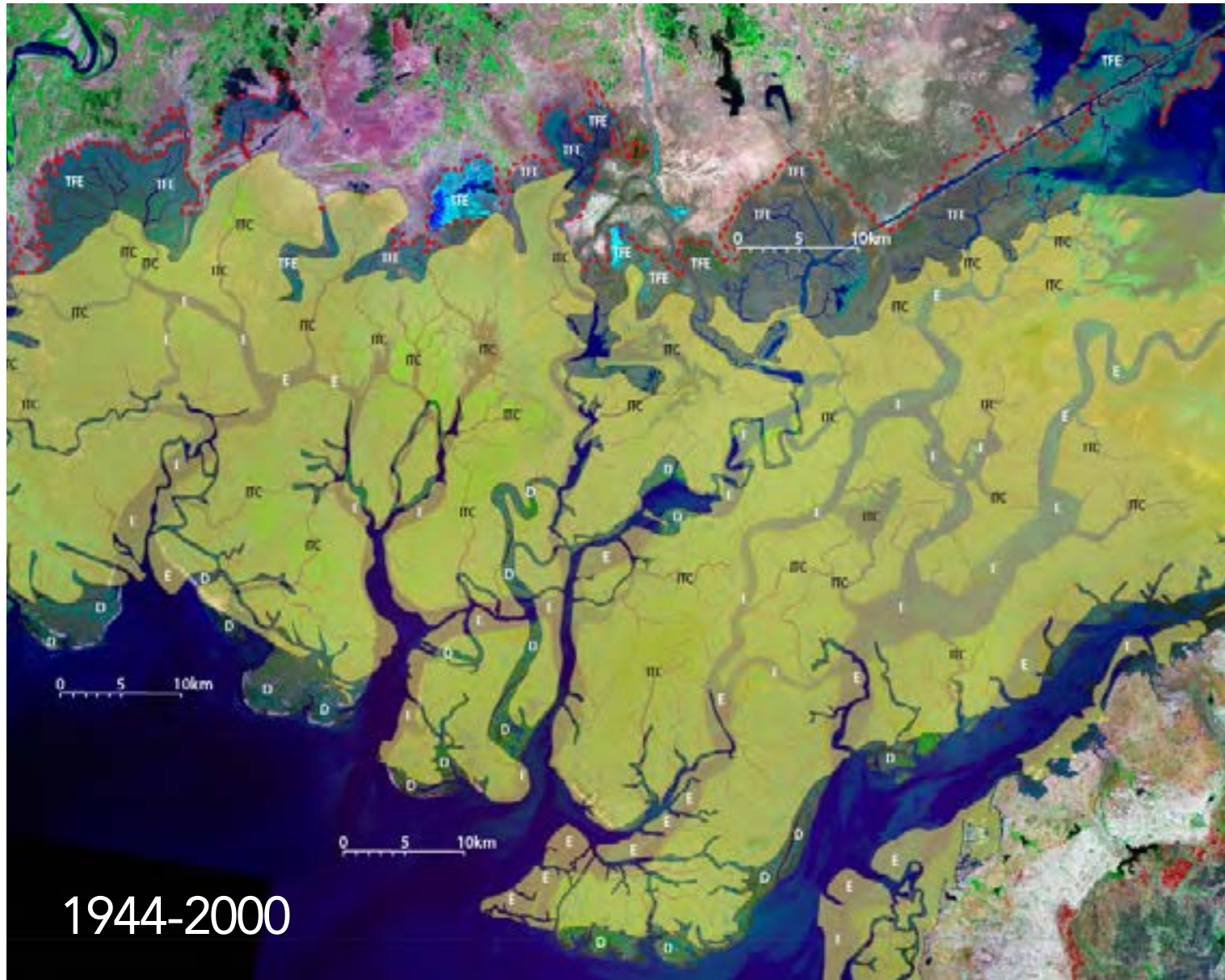
with 6 comments

Peace Arch News



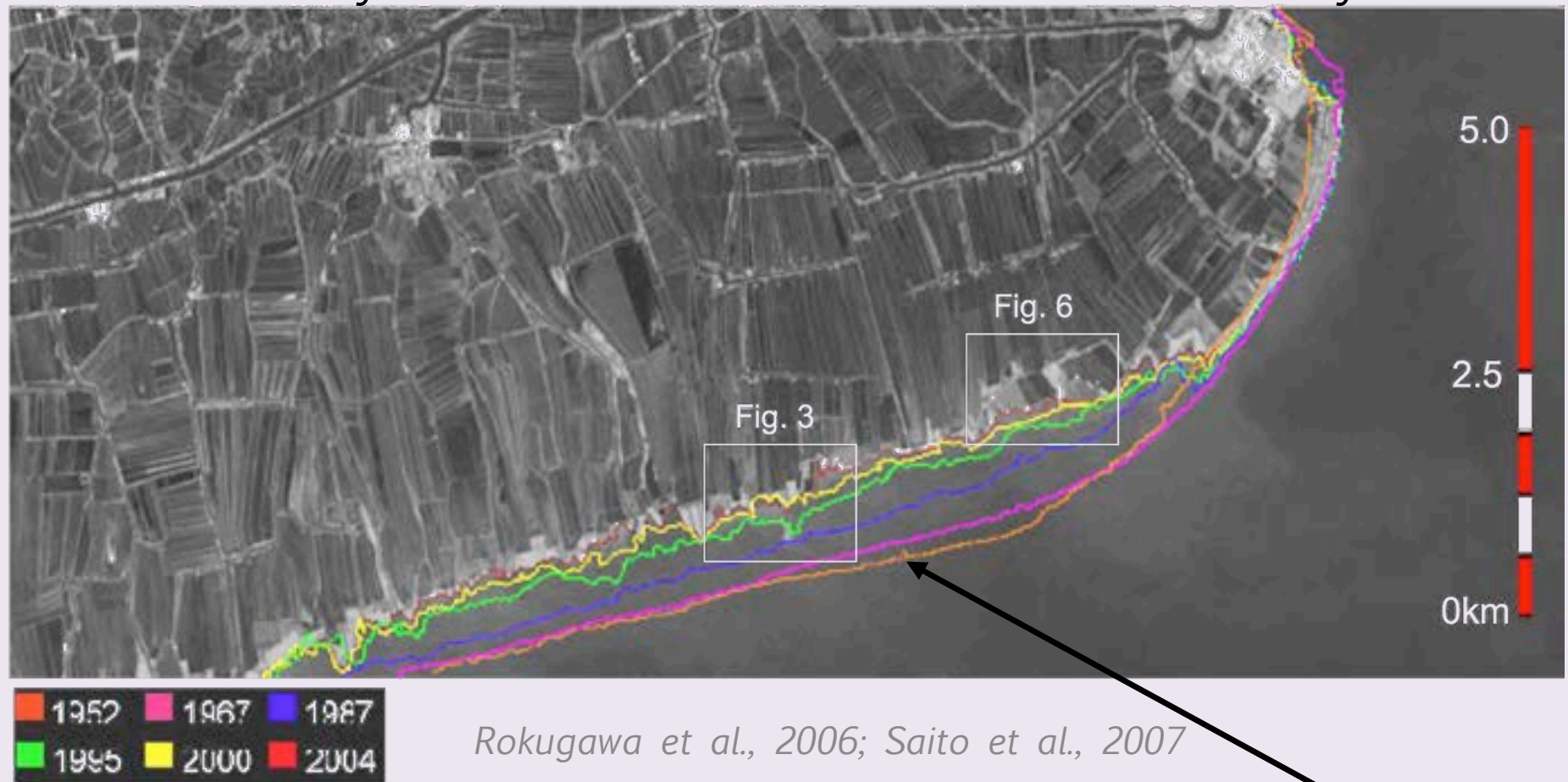


Mississippi Delta, 1984-2012, LandSat



Starved of sediment, erosion dominates the modern Indus Delta. New estuaries and tidal channels have formed, and tidal flats have extended landward.

The Chao Phraya Delta shoreline has retreated 1 km in 50 years.



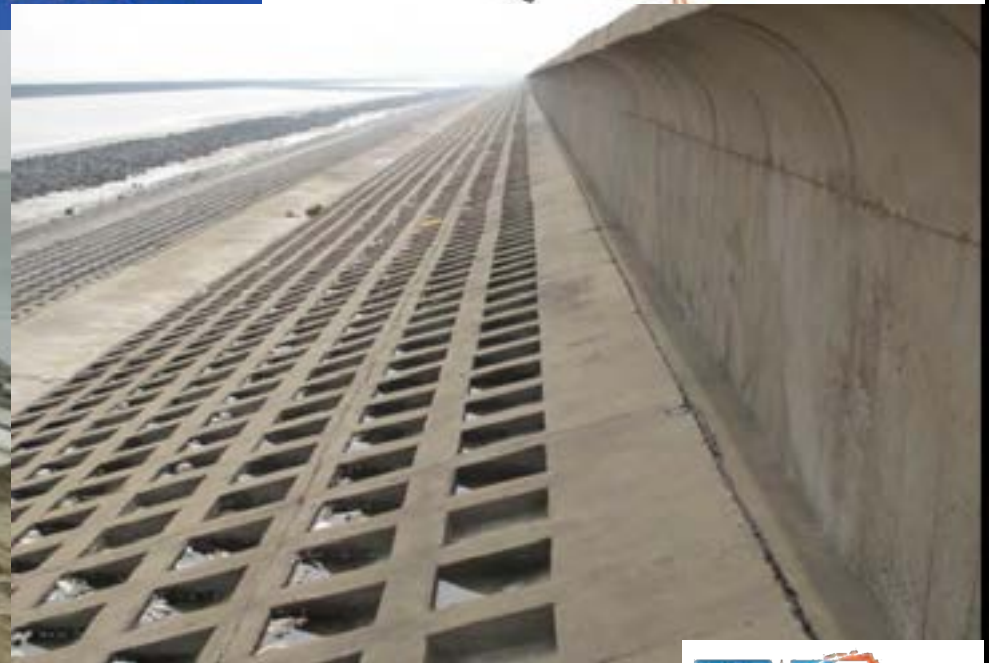
构筑海防钢铁长城

Construct the Firm Coast Defence as Great Wall

保障经济健康发展

Ensure the Healty Development of Economy

江苏省海防委员会立

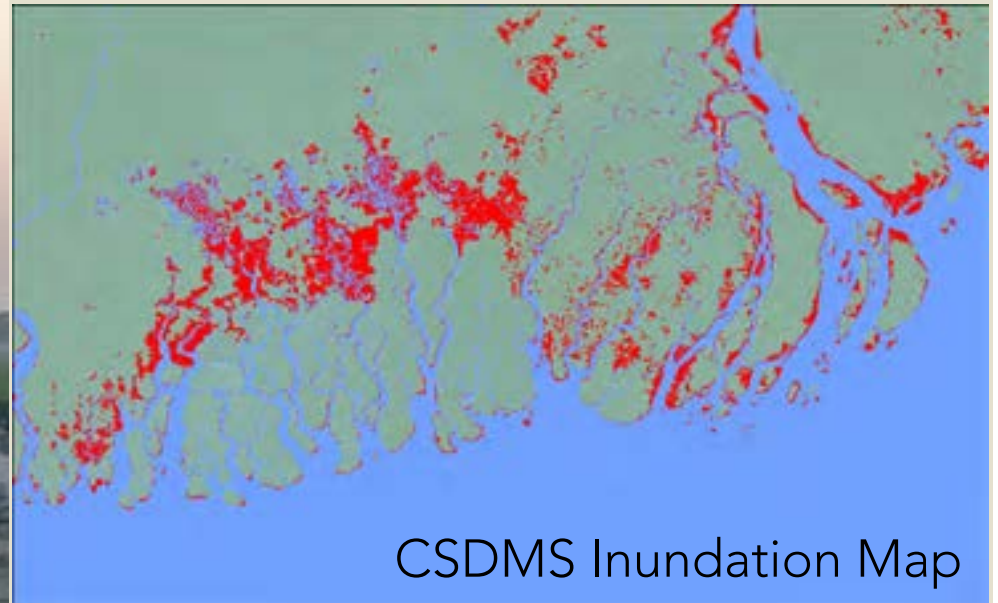


Storms, Storm Surges and Floods are killers.

Every year levees in the GBM delta need of repair, as the dynamic channels churn up the landscape. *Photo credit. Irina Overeem*



Ganges-Brahmaputra Delta



CSDMS Inundation Map

Cyclone Aila, May 2009, caused extensive GBM flooding, as the storm surge reached 6-7m



San Joaquin Delta



Mississippi Delta

Even in rich countries,
infrastructure failures are common



Rapid Drawdown
induced failures
(Mississippi Delta)



New Orleans

Vietnam



Amazon



Countries need to consider
methods of adaptation

Netherlands



Germany



Fight or Flight = Protect or Get out of the Way



Deltas hold 500+M people, are highly productive, biodiversity hotspots, filters, repositories & reactors for water, sediment, carbon, nutrients, pollutants. They are megacity hubs, and ports, and offer waterway transport. Ecosystem services include forestry, fisheries and agriculture. Human interventions put deltas in peril through flooding, shoreline retreat, land subsidence, saltwater intrusion, and saline soils. Food security is threatened, infrastructure repairs need ever increasing resources for coastal protection.