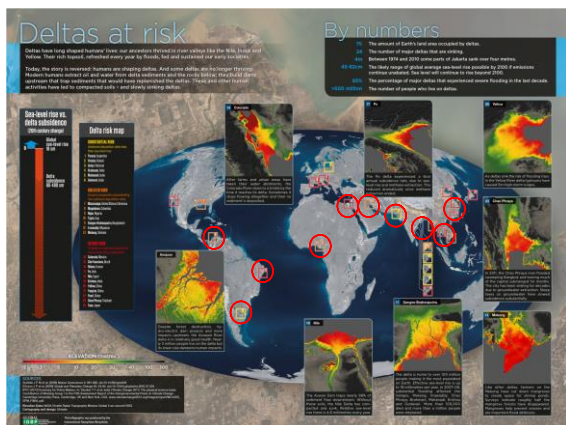




## Livelihood Implications of Infrastructure Development for Delta Resilience in the Global South

Robert Fletcher  
International Development Studies  
Utrecht University



## Focus on Global South

- Dearth of domestic resources
- Changing face of international aid
- Scarcity of climate funding
- Growing emphasis on Public-Private Partnership

## Dutch Water 'Top Sector':

"With over 26% of land below sea level, the Netherlands always has had to protect itself from the risk of floods. To survive, the Dutch had to be inventive and develop a highly sophisticated means of water management. . .By involving relevant stakeholders and designing sustainable engineering and 'smart' infrastructure for complex settings, standards of Dutch water management are very high."

Source: <http://www.hollandinvietnam.org/doing-business/sector-briefings/water-sector.html>

## Dutch Water 'Top Sector':

"The Netherlands is home to the world's ten best engineering firms in the field of water and to two world leaders in land reclamation, dredging and coastal construction. In water technology, innovative companies lead the way in the purification and reuse of water. A large network of smaller companies offers specialists and cost effective solutions."

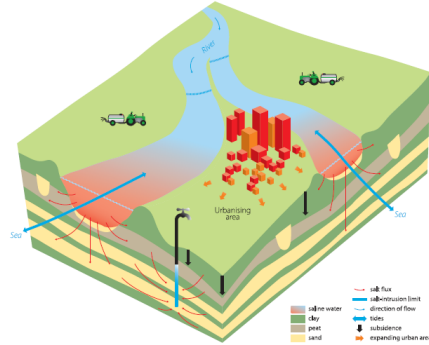
Source: <http://www.dutchwatersector.com/about-us/>



## Issues in Mekong Delta

- Ongoing industrialisation will take up more space and increase demand for water as well as production of wastewater.
- Upstream hydropower development could reduce dry season discharge, increasing salinity intrusion.

Future Deltas



Future Deltas

## Proposed Infrastructural Responses:

- Improvements of the water supply system and salinity barriers along canals.
- Large salinity barriers across the main estuaries.
- Shifting cropping patterns to more salt-tolerant crops such as shrimp and fish culture.
- Full flood protection (with consequences for soil replenishment).

Future Deltas



Future Deltas



## Research Questions:

- Who profits from projects and who pays?
- Who benefits and who suffers?
- Who is consulted in decision-making? Who is excluded?
- How is pursuit of profit reconciled with social equity?
- **To what extent do projects contribute to inclusive, equitable, and sustainable development?**

Future Deltas



Thank you!!!

**Robert Fletcher**  
**International Development Studies**  
**[r.fletcher@uu.nl](mailto:r.fletcher@uu.nl)**

Future Deltas